

Finding Housing at UC Berkeley



Welcome to Berkeley!

Today's Presenter:

Anna McCreedy - Berkeley International Office

Katelyn Sadler - Cal Housing/Cal Rentals

Overview

- Points to Consider
- How to Find Housing
- Cost of Housing
- On campus vs. Off campus
- Types of Housing
- Where to live
- Signing a Housing Contract



Points to Consider

Decisions to make:

- Would you like to live on or off campus?
- Would you like a meal plan or do you plan to cook for yourself?
- Will you live alone or with roommates?
- Where will you live?
- How long do you want your commute to be?
- What is your budget?
- Do you know which area around campus fits you best?
- Where are the majority of campus buildings you will use?



Where to Begin Your Search?

https://internationaloffice.berkeley.edu/living_housing

Where to Search

- Berkeley International Office
<https://internationaloffice.berkeley.edu/living/housing>
- Cal Rentals
och.berkeley.edu
- Cal Housing
housing.berkeley.edu
- Padmapper
- Apartments.com
- Craigslist
- ASUC Housing Portal
<https://asuchousing.berkeley.edu/>

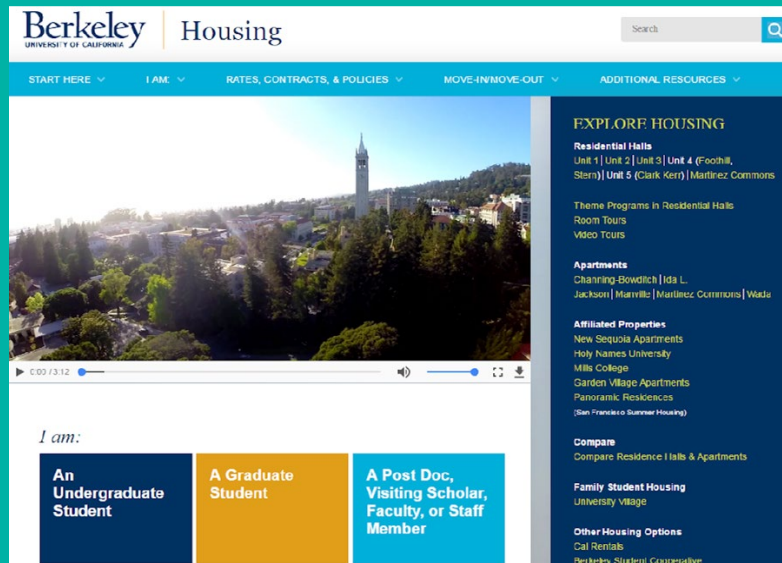


On Campus Housing

<https://housing.berkeley.edu>

Phone: (510) 642-4108 Email: Reshall@berkeley.edu

2610 Channing Way, 2nd Floor



Cal Housing provides a variety of Housing Options for UC Berkeley Students:

- Residence Halls
- Undergraduate Apartments
- Graduate Single Student Apartments (for graduate students without partners or children).
- Family Housing (for students who are married and/or have children).



On Campus Housing

Newly admitted freshmen students and some newly admitted transfer students will receive priority for campus housing as long as they meet all housing application requirements and deadlines; **however, we cannot guarantee an offer.** Due to COVID-19, we may need to reduce occupancy in our residence halls, which means we may have fewer spaces available.



Vaccination Requirements

The University of California is developing policies for UC campuses, and currently is encouraging vaccines for university communities while it reviews policy requirements. It expects a final policy will be ready by the start of the Fall 2021 term. Please continue to follow your Berkeley email messages, as they will contain important future updates on this matter.

Living On Campus



Benefits

- On or close to campus
- Dining options close to each campus housing location
- Academic Service Centers and Study Lounges.
- 24-hour locked residence halls with restricted access.
- Blue Light emergency phones located around Units courtyards/ complexes.
- Faculty in Residence Program
- In Hall Staff Support: provide campus resources, policy enforcement, peer advising, fun programs to build community and meet people.
- Leadership Opportunities

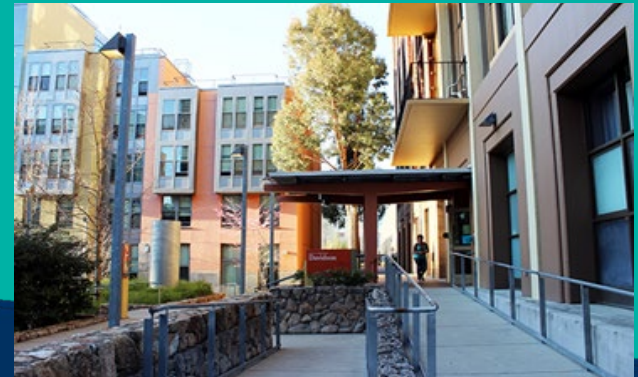
Things to Be Aware Of

- Alcohol and smoking policies are strictly enforced:
 - Students under the age of 21 not permitted to drink alcohol.
 - UC Berkeley is a non-smoking campus
 - Drugs, including marijuana, are not permitted on campus. Having a medical marijuana card does not allow you to smoke marijuana on campus.
- Most residence halls will close during Winter and Summer Breaks. Winter break housing available in Martinez Commons ResHall and campus apartments.
- Graduate Single Student Apartments will remain open during Winter and Summer Break.

Undergraduate Housing

Residence Hall Options (for all undergraduate students):

- ***Blackwell Hall***
 - Standard Double and Single Rooms
- ***Unit 1, Unit 2, and Unit 3***
 - High-rise Standard style halls with Double and Triple Rooms
 - Mini-suite options with semi-private bathroom shared between two rooms
 - Unit 1: Home to Substance Free Environment. African American Theme Program, Native American Theme Program
 - Unit 2: Home to Asian & Pacific American Theme House
 - Unit 3: Home to Casa Magdalena Mora: Chincanx & Latinx Theme, UNITY Gender & Sexuality Theme Program
- ***Foothill & Stern Halls***
 - Stern: Womxn's Community, Standard and suite-style rooms, Empowering Womyn in STEAM (WISE) Theme Program
 - Foothill: Suite-style Rooms
- ***Clark Kerr Campus***
 - Standard and Suite-style Rooms
 - Global Environmental Theme Program (GETH)



Undergraduate Housing

Apartments (priority provided for Transfer, Continuing, and EAP Students):

- Channing Bowditch Apartments
 - Double and single rooms in shared 2-4 bedroom apartments
- Maximino Martinez Commons Residence Hall & Apartments
 - Single rooms in shared 4-5 bedroom apartments
- New Sequoia Apartments
 - Single and double rooms in shared 2 bedroom apartments
- Wada Apartments
 - Double and triple rooms in shared 2-3 bedroom apartments
- Clark Kerr Apartments
 - Double or triple rooms in shared 2 bedroom apartments
- Panoramic Berkeley Apartments
 - Single rooms in shared 4 and 5 bedroom apartments
- Enclave Apartments
 - Single and double rooms in shared 3 to 5 bedroom apartments

Options for Students with Families:

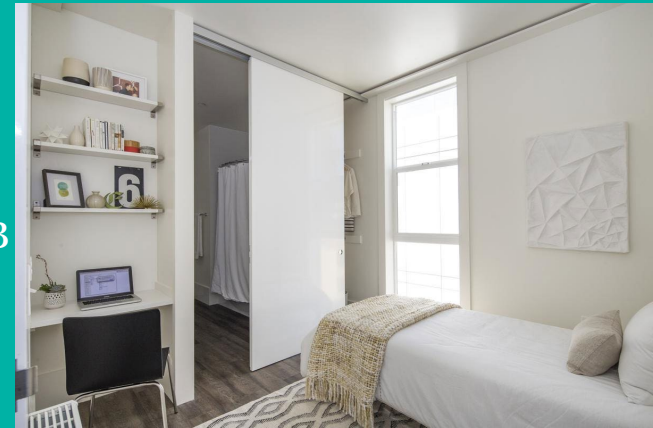
- University Village Family Housing: Albany, CA
 - 1, 2, and 3 bedroom apartments
 - Priority provided to students with dependent children



Graduate Housing

Options for Single Students:

- Ida Louise Jackson Graduate House
 - Single room in 2, 3, 4, 5, or 6 bedroom apartment
- Manville Apartments
 - Single studio apartments
- Panoramic Berkeley Apartments
 - Single room in 3 or 4 bedroom
- Anticipated Fall 2021: Intersections
 - Located in Emeryville, CA, a 15 min drive from UCB
 - Layouts TBD



Options for Students with Families:

- University Village Family Housing: Albany, CA
 - 1, 2, and 3 bedroom apartments and townhouses
 - priority for student parents with dependent children

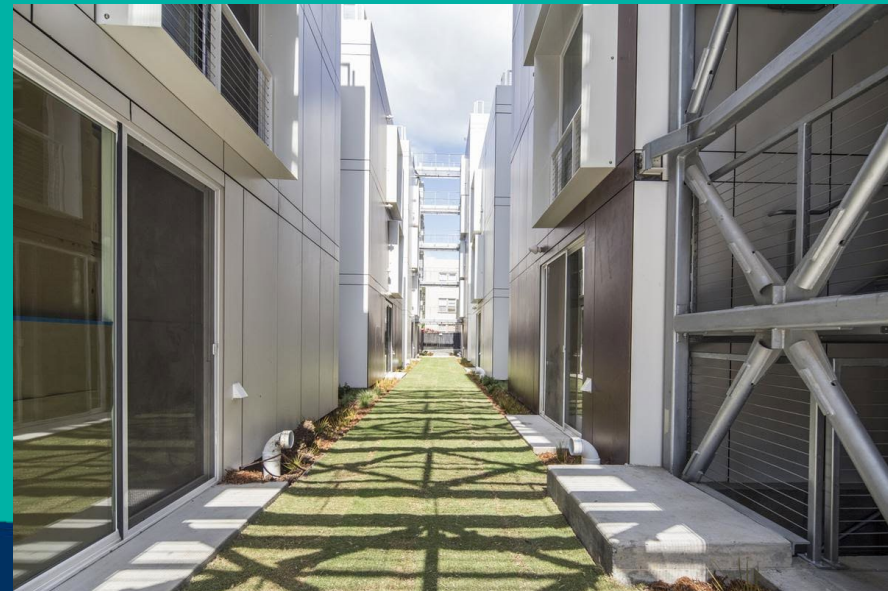


Summer Housing

Undergraduate and graduate students arriving early to campus in the summer can find short-term on campus housing during the summer.

To apply, submit the Summer Transition 2021 Application at portal.housing.berkeley.edu

Learn more here:
<https://housing.berkeley.edu/transition-housing>



Housing Application

Application deadline passed for continuing students and new freshmen admits, but available for transfers:

Apply at portal.housing.berkeley.edu

Undergraduate Housing Application Deadlines:

- Fall 2021 First Year Students: May 2, 2021
- Fall 2021 Transfer Students: June 2, 2021

Graduate Students

- Rolling Deadline- Limited Availability

Cancelling Contract



- For international students with travel restrictions related to COVID - 19 or who cannot obtain a non-immigrant Visa
 - if you submit a cancellation form to reshall@berkeley.edu before August 1, 2021, we will cancel your housing contract with no cancellation fees and a full reversal of your advance payment
- For all other students
 - In order to grant cancellation, a replacement student must be found to fill your space or you remain financially responsible for the year
 - If granted, \$150 fee before move in, \$300 after move in

Need more info?

housing.berkeley.edu

reshall@berkeley.edu

Off Campus Housing

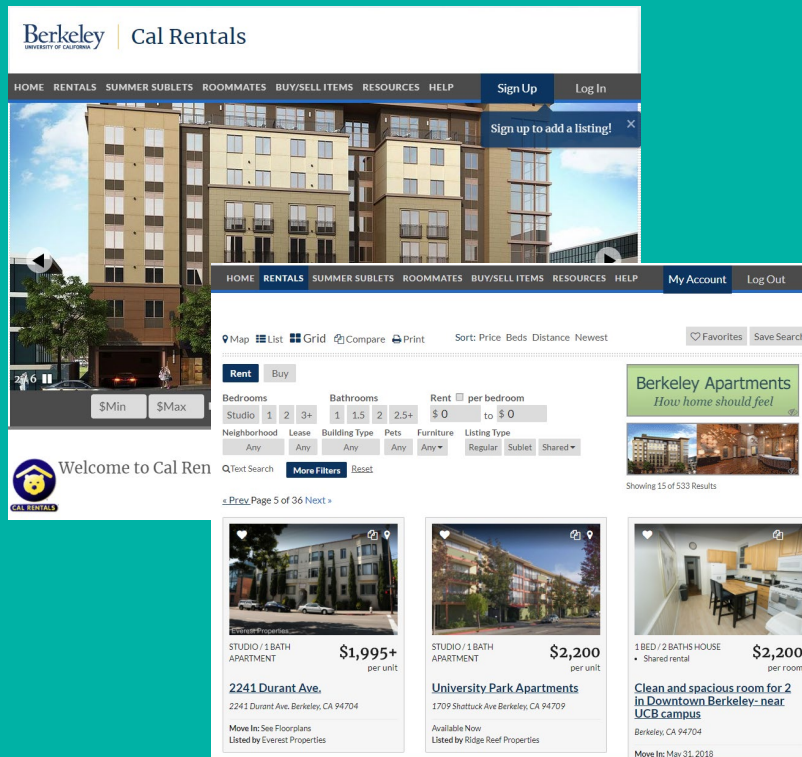
- Search for Housing Using CalRentals
- Neighborhoods
- Greek life
- Co-ops
- iHouse



Cal Rentals

<https://och.berkeley.edu>

Phone: (510) 642-3663 Email: homeinfo@berkeley.edu
2610 Channing Way, 2nd Floor



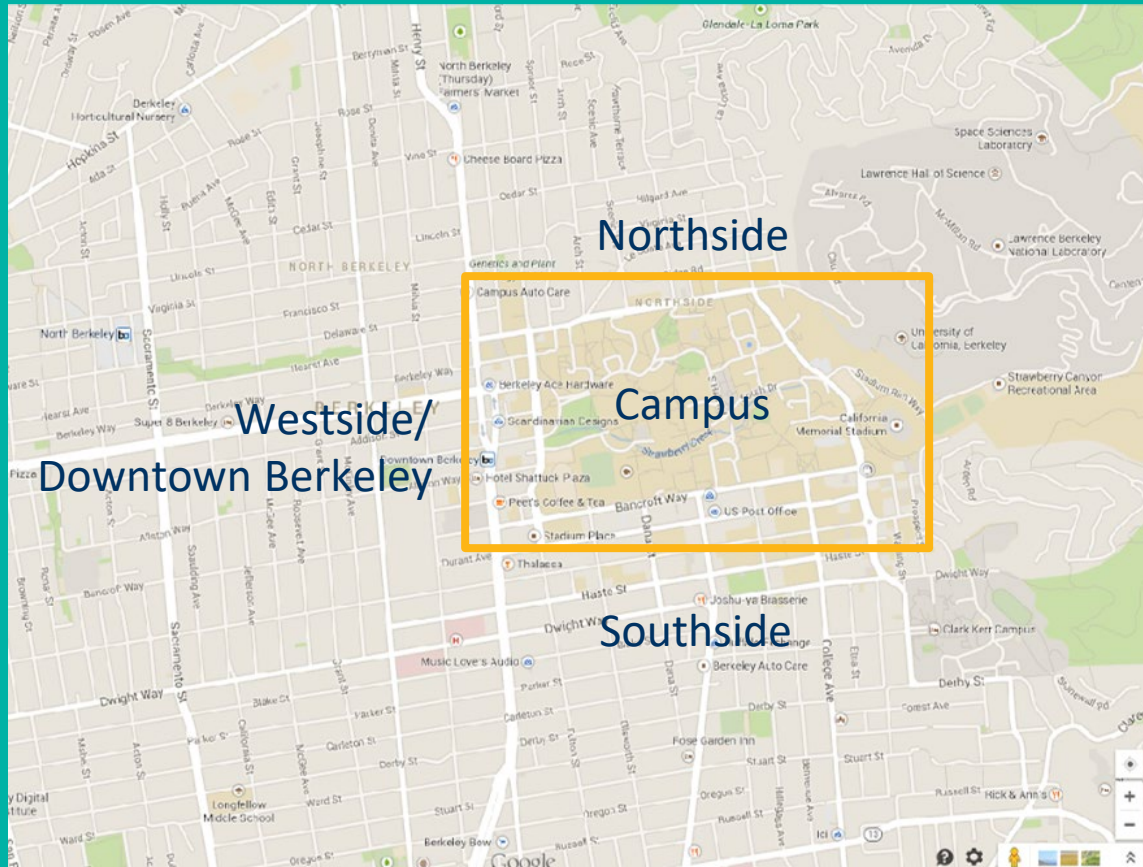
- UC Berkeley offers Cal Rentals; a free off campus listing service for UC Berkeley students and affiliates.
- Cal Rentals provides rental information and advising for students looking for off campus housing.
- Cal Rentals provides message boards to find roommates, sublets, and other resources.

Average Off Campus Housing Costs

2020 TYPICAL RENT AVERAGES				
UNIT TYPE	BERKELEY	OAKLAND	ALBANY	EL CERRITO
APARTMENTS				
STUDIO	\$1,895	\$1,635	\$1,874	\$2,531
1 BEDROOM	\$2,050	\$1,960	\$1,831	\$2,110
2 BEDROOM	\$2,800	\$2,555	\$2,480	\$2,450
3 BEDROOM	\$3,895	\$3,164	\$3,514	\$3,587
4+ BEDROOM	\$5,196	\$4,017	\$4,393	\$4,166
ROOM RENTAL	\$1,411	\$1,368	\$1,315	\$1,300
HOUSE				
2 BEDROOM	\$3,031	\$3,512	\$2,864	\$2,894
3 BEDROOM	\$4,394	\$3,897	\$4,140	\$3,317
4+ BEDROOM	\$6,609	\$5,460	NO DATA	\$5,500

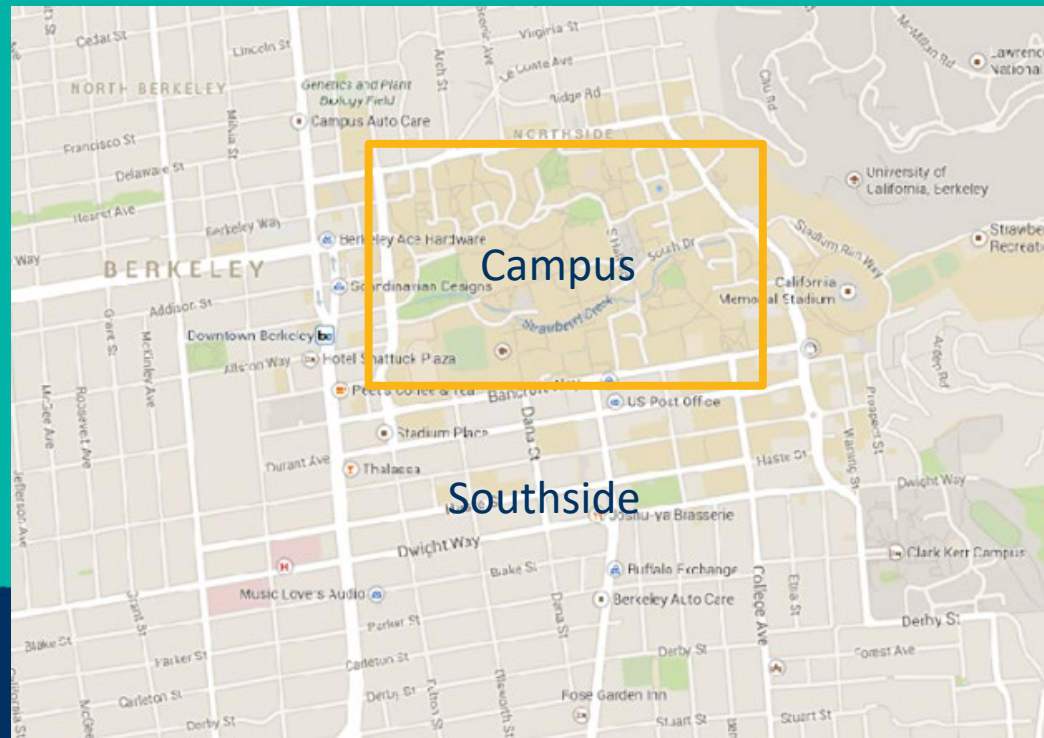
From Cal Rentals, 2020

Campus Neighborhoods



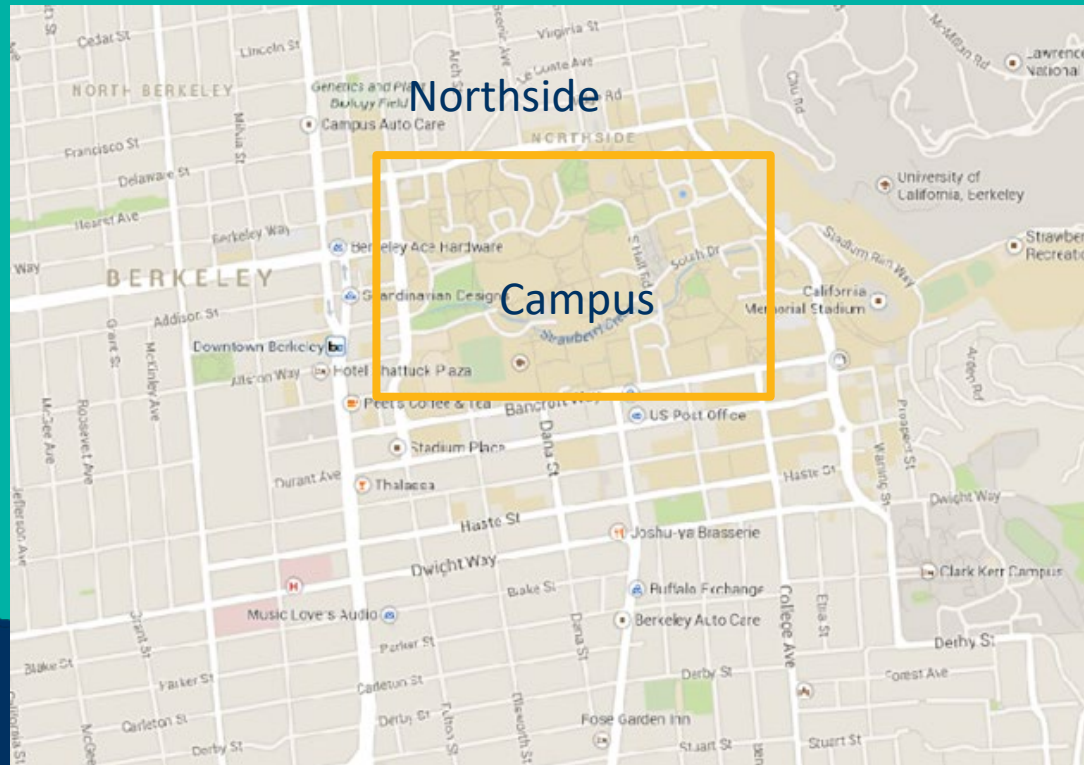
Southside

A bustling, student-oriented area adjacent to south campus. Bookstores, record stores, cafes and restaurants abound. Telegraph Avenue is a main feature with its colorful street vendors. Student housing is relatively plentiful in Southside.



Northside

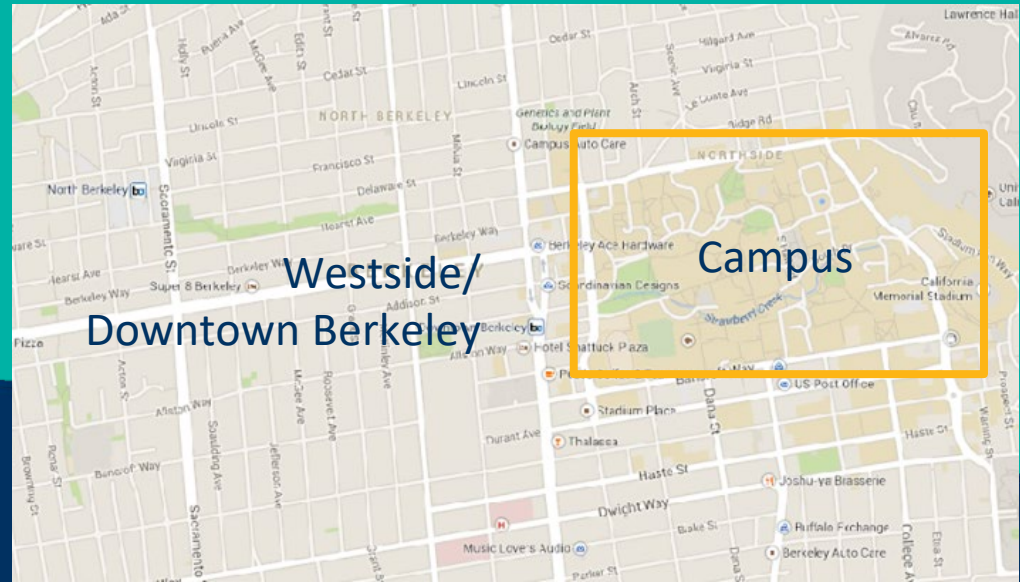
This area directly north of campus is a contrast to the bustling Southside area. Quiet by comparison, Northside boasts several student coops and charming apartment buildings interspersed with large, single family homes. The main street is Euclid Avenue, which features a small grocery store and shops and restaurants.



Westside/Downtown

South of University Avenue and west of Sacramento Street is the area known as West Berkeley. Modest single-family homes are interspersed with apartment buildings, and the neighborhood is dotted with Victorian farmhouses that were the original dwellings in the area.

This area is close to many public transit options, including the Bay Area Regional Transit (BART) train.



Greek Life

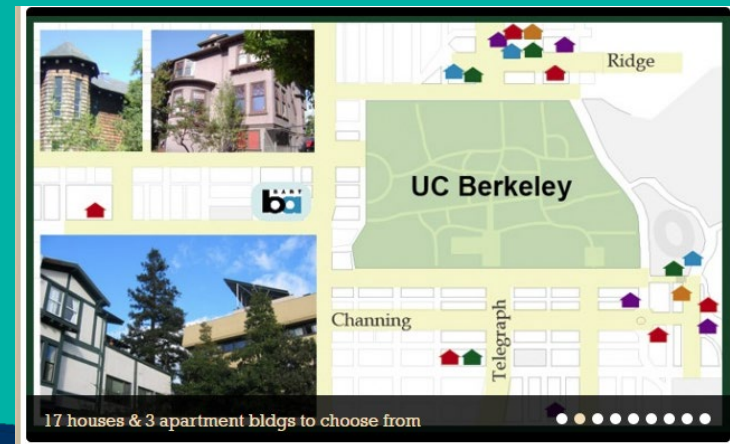
- Fraternities and Sororities
- Leadership, Scholarship, Friendship & Service
- Some have housing options (available for future)
- Must apply for and join a Fraternity or Sorority

lead.berkeley.edu/about-calgreeks



Co-Ops

- Cooperative: large residence, membership based where members share resources and everyone collaborates
- Personally maintain residence
- Can be themed
- Very social
- Many rooms available, may have waitlist at this time of year
- Most affordable option in area
- <https://www.bsc.coop/>



iHouse

- Popular option for graduates and EAP students
- Open to both international and domestic students
- Resident Support Services: Resident Assistants, Program Office, Events etc.
- Meal plan
- Northside of Campus
- Price range from \$16,932 - \$21,912 per academic year

ihouse.berkeley.edu/



On vs. Off Cost of Living

Off Campus

- Prices vary
- Typically ask for deposit and first and last months rent up front
- Set up costs for utilities. Utilities (Electricity, Cable, Water) are typically not included in rent
- Most often will need to provide own furnishings at an additional expense

On Campus

- Prices are based on type of room
- (Single, Double, Triple, Suite)
- ResHall prices from **\$16,810** to **\$21,355** per academic year, includes meal plan
- Apartment prices from **\$12,155** to **\$17,080** per academic year, no meal plan
- Campus Housing Includes:
 - Includes electricity, cable, internet, water, maintenance costs, etc.
 - Furniture provided
 - No up-front deposit- only a \$300 advanced payment to secure housing
- Learn More: housing.berkeley.edu/rates

Signing a Housing Contract

- Agreement between two parties usually enforceable by law
- Be sure to read the whole contract, including the fine print
- Don't sign if you are not clear
- Be brave, ask questions





Special Considerations

- Best to start housing search as early as possible, but you CAN wait until later in the summer to finalize plans
- Most turnover in May/June, but still availability in July/August

Be Aware of Scams/Frauds

- These primarily appear as online advertisements on (sites such as craigslist.org). The contact person will insist that you send them money for housing accommodations even though you have not yet visited the property in person. When students show up to the address, the place is unavailable.
- If you are required to wire money ahead of time, please be sure the housing post is legitimate.
 - Check the address on a search engine to ensure it is a residential building.
 - Try to arrange a digital viewing via Zoom, skype, FaceTime, etc. to confirm it is a real address and to see the unit in person

Move In

- Move in processes and dates are still being finalized for campus housing.
- Move in for Fall 2021 will be spaced out over the course of several days to decrease density and facilitate social distancing and public health protocols.
- Each student will be assigned a move in date, between August 16-22, based on their housing assignment. More information will be shared about this in late June/July 2021.

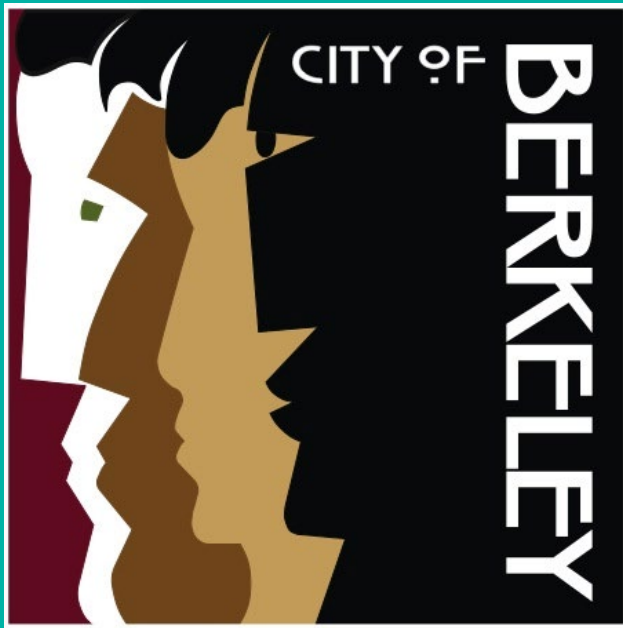
Safety Tips

<https://nightsafety.berkeley.edu/>

- Bearwalk escort (Dusk - 3:00 am)
- Night Safety Shuttle (7:30 pm - 3:00 am)
- Door-to-door service (3:00 am - 5:30 am)
- City awareness
 - be vigilant of surroundings
 - Walk in pairs/groups
 - avoid deserted areas
 - use well-lit, well-traveled routes



City of Berkeley Rent Board



<https://www.cityofberkeley.info/rent/>

- Resource guide/support for landlord and tenants
 - Checklist for new renters
 - Checklist to ensuring your rental property is safe

Student Legal Services



[https:// sls.berkeley.edu/](https://sls.berkeley.edu/)

- Provides counsel to students who are encountering disputes or concerns with their landlord or property manager

Basic Needs Center

<https://basicneeds.berkeley.edu/>

- Provides resources and support for students experiencing food and housing insecurity

Questions?

- Contact information:
 - Anna McCreedy – ammccreedy@berkeley.edu
 - reshall@berkeley.edu for On Campus undergrad & graduate housing questions
 - apts@berkeley.edu for Family Housing questions
 - homeinfo@berkeley.edu for Off Campus Housing questions
 - UC Berkeley Housing Facebook group
 - Free and For Sale Berkeley (on Facebook group)
 - **ihres@berkeley.edu**

Some information adapted from International Students Association at Berkeley (ISAB) Finding Housing presentation
<http://isab.berkeley.edu/>